

M/LE

LEAD FREE

TACTICAL BULLETS

MILITARY TECHNOLOGY • LEAD-FREE CONSTRUCTION • SUPERIOR ACCURACY



TAC-LR

Long range bullets with high ballistic coefficient, precise tolerances and superior accuracy.



50 BMG
DIA. .510
WGT. 750 GR
TYPE TAC-LR BT
S.D. .412
B.C. 1.070
CAT.# 51075

50 BMG++
DIA. .510
WGT. 750 GR
TYPE TAC-LR BT
S.D. .412
B.C. .766
CAT.# 51076



The all-new line of M/LE bullets give operators a decisive advantage, whether in Baghdad, Detroit or on the local range, the Barnes M/LE line has the tactically superior bullet.

RRLP

Highly frangible, open tip that maintains integrity at high velocities in fast twist barrels. Reduced ricochet.

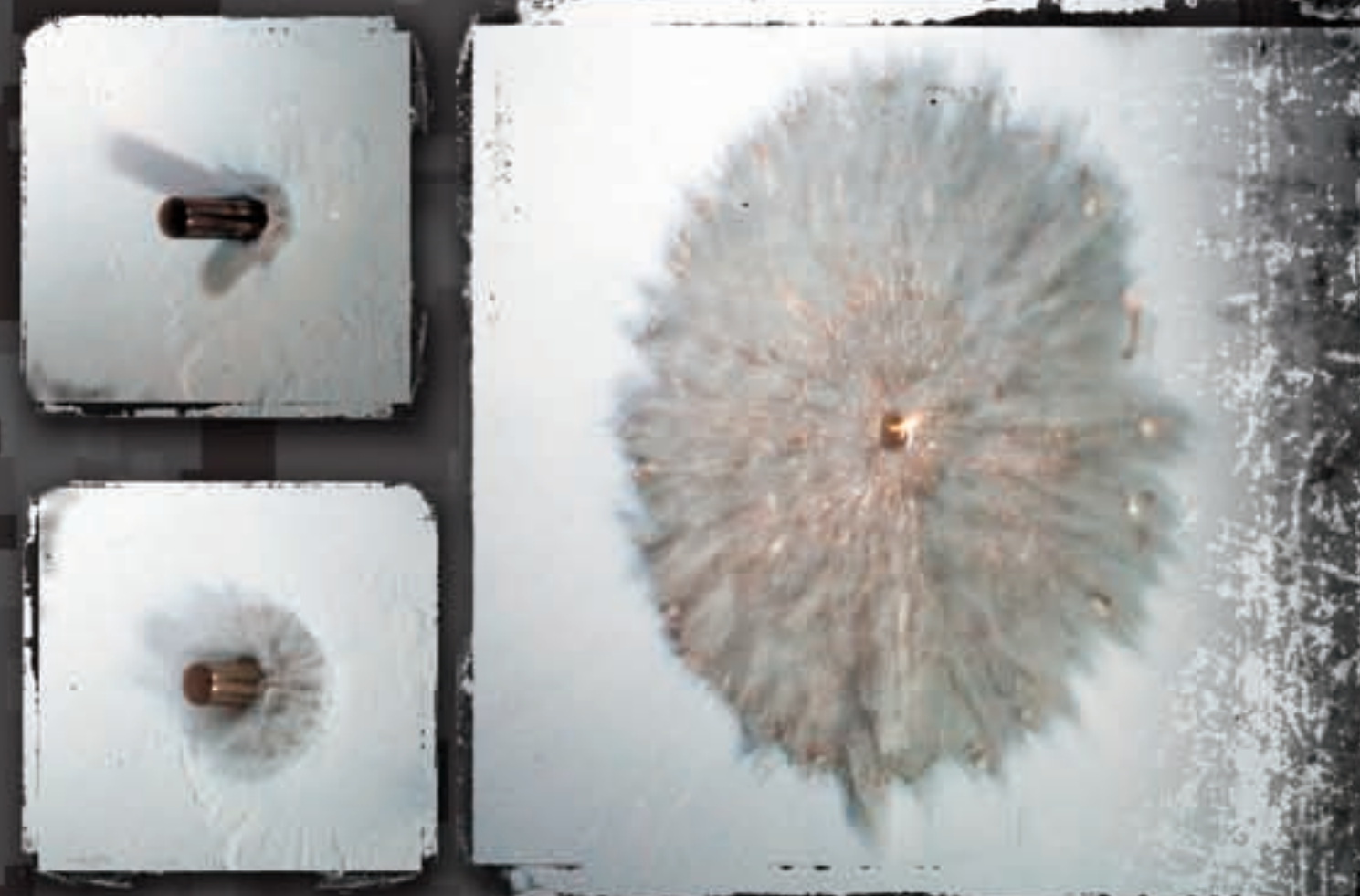


223/5.56*
DIA. .224
WGT. 55 GR
TYPE RRLP FB
S.D. .157
B.C. .225
CAT.# 22414

30 CALIBER
DIA. .308
WGT. 140 GR
TYPE RRLP FB
S.D. .211
B.C. .339
CAT.# 30804

7.62 x 39
DIA. .310
WGT. 108 GR
TYPE RRLP FB
S.D. .161
B.C. .243
CAT.# 31010

Sequence shows 55-grain 5.56x45mm RRLP bullet at moment of impact, then completely disintegrating against 1/2-inch-thick AR 500 steel Action Target.



TAC-XP

Superior on intermediate barriers. Great for LE and personal defense.



380 ACP
DIA. .355
WGT. 80 GR
TYPE TAC-XP
S.D. .091
B.C. .107
CAT.# 35500

9MM
DIA. .355
WGT. 115 GR
TYPE TAC-XP
S.D. .130
B.C. .167
CAT.# 35501

357 SIG
DIA. .355
WGT. 125 GR
TYPE TAC-XP
S.D. .142
B.C. .159
CAT.# 35503

38 SPECIAL
DIA. .357
WGT. 110 GR
TYPE TAC-XP
S.D. .123
B.C. .156
CAT.# 35703

10MM/40 S&W
DIA. .400
WGT. 140 GR
TYPE TAC-XP
S.D. .125
B.C. .128
CAT.# 40005

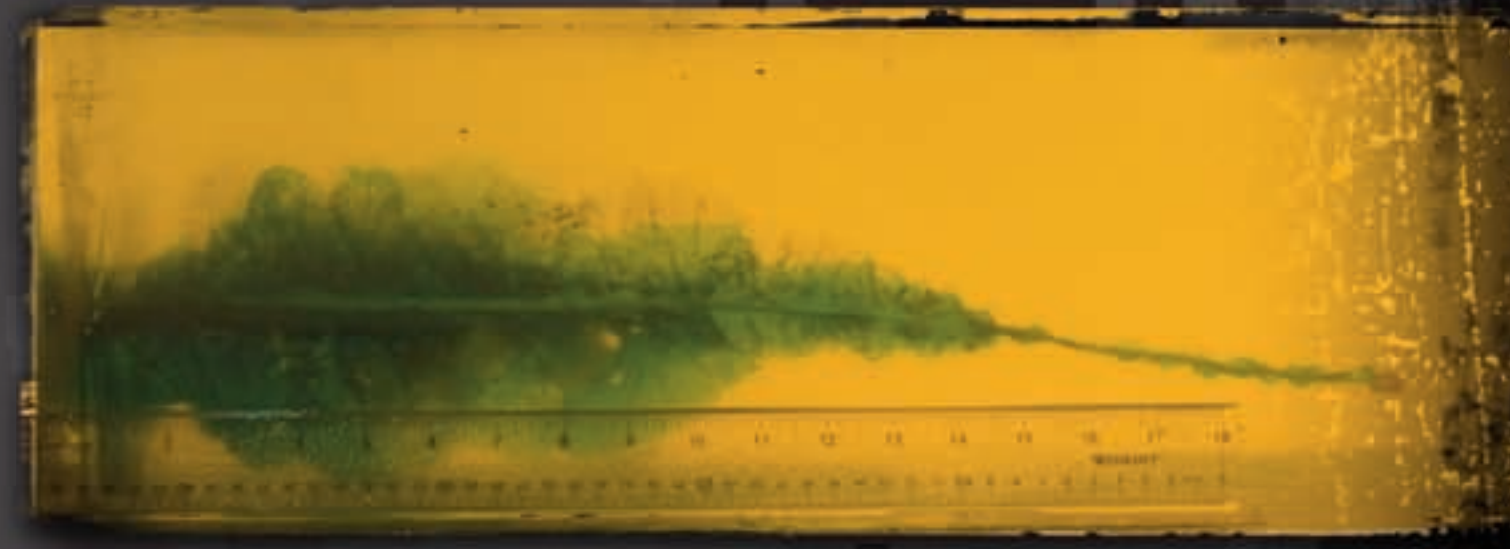
10MM/40 S&W
DIA. .400
WGT. 155 GR
TYPE TAC-XP
S.D. .138
B.C. .138
CAT.# 40006

44 SPECIAL
DIA. .429
WGT. 200 GR
TYPE TAC-XP
S.D. .155
B.C. .138
CAT.# 42912

45 GAP
DIA. .451
WGT. 160 GR
TYPE TAC-XP
S.D. .112
B.C. .133
CAT.# 45106

45 ACP
DIA. .451
WGT. 185 GR
TYPE TAC-XP
S.D. .130
B.C. .167
CAT.# 45108

After passing through glass and clothing, a 110-grain 7.62x39mm TAC-X bullet penetrates 21 inches of ballistic gel in destructive fashion.



TAC-X

Controlled double-diameter expansion. Penetrates barriers with minimum deflection. Superior functionality and accuracy at long range.



223/5.56
DIA. .224
WGT. 55 GR
TYPE TAC-X FB
S.D. .157
B.C. .209
CAT.# 22405

223/5.56*
DIA. .224
WGT. 62 GR
TYPE TAC-X BT
S.D. .177
B.C. .287
CAT.# 22406

223/5.56*
DIA. .224
WGT. 70 GR
TYPE TAC-X BT
S.D. .199
B.C. .314
CAT.# 22407

6.8MM
DIA. .277
WGT. 85 GR
TYPE TAC-X FB
S.D. .158
B.C. .246
CAT.# 27733

6.8MM
DIA. .277
WGT. 110 GR
TYPE TAC-X BT
S.D. .205
B.C. .323
CAT.# 27734

30 CALIBER
DIA. .308
WGT. 110 GR
TYPE TAC-X FB
S.D. .166
B.C. .264
CAT.# 30821

30 CALIBER
DIA. .308
WGT. 150 GR
TYPE TAC-X BT
S.D. .226
B.C. .369
CAT.# 30824

30 CALIBER*
DIA. .308
WGT. 123 GR
TYPE TAC-X BT
S.D. .183
B.C. .404
CAT.# 30826

7.62 x 39
DIA. .310
WGT. 123 GR
TYPE TAC-X BT
S.D. .183
B.C. .275
CAT.# 31003

50 BMG
DIA. .510
WGT. 647 GR
TYPE TAC-X BT
S.D. .355
B.C. .572
CAT.# 51006

*Notes: #22406 - 223/5.56 62gr. TAC-X - 1.9" twist or faster; #22407 - 223/5.56 70gr. TAC-X - 1.8" twist or faster; #22414 - 223/5.56 55gr. RRLP - 1.9" twist or faster.
+ #30826: The 30 caliber 168 grain TAC-X has our Match Grade ogive which lengthens the nose profile. It is best suited for cartridges such as the 308 Winchester, 30-06 and 300 Weatherby.
++ #51076: The 50 BMG 750 grain TAC-LR BT Tangent has a shortened Match Grade ogive which functions best in a factory magazine fed rifle. The standard secant ogive is designed for use in single shot rifles where cartridge overall length isn't an issue.

X Bullet is registered trademarks of Barnes Bullets. BARNES, M/LE, TAC-X, TAC-XP and TAC-LR are trademarks of Barnes Bullets. Bullet images are shown actual size. Some images may vary slightly from the actual produced bullet. Visit www.barnesbullets.com/mle for updated bullet specifications.



Unleaded. Unfailing. Unbeatable.™